



# Replacement Power Cord for Nighthawk Tow Bar

## INSTALLATION INSTRUCTIONS

#1676-MFX  
04/25  
RS

ROADMASTER, Inc.

6110 NE 127th Ave.

Vancouver, WA 98682

360-896-0407

www.RoadmasterInc.com

### What You'll Need

- Box Knife
- Phillips Screwdriver
- Pliers
- Wire Strippers
- Wire
- Crimpers
- Heat Gun

### IMPORTANT NOTICE!

All illustrations and specifications contained herein are based on the latest information available at the time of publication approval. ROADMASTER, INC. reserves the right to make changes at any time without notice in material, specification and models or to discontinue models.

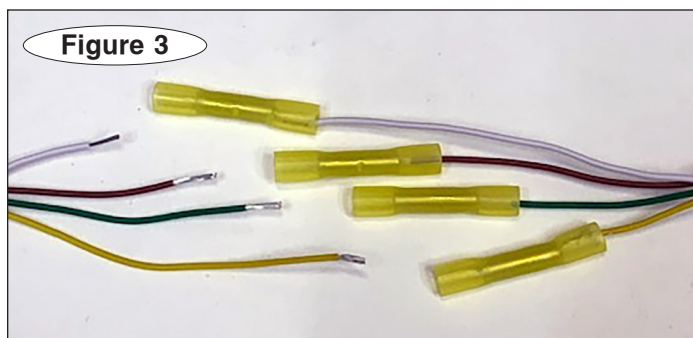
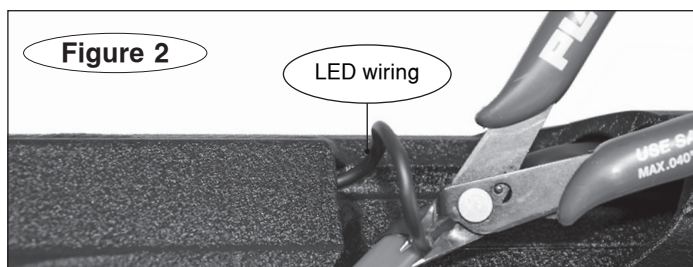
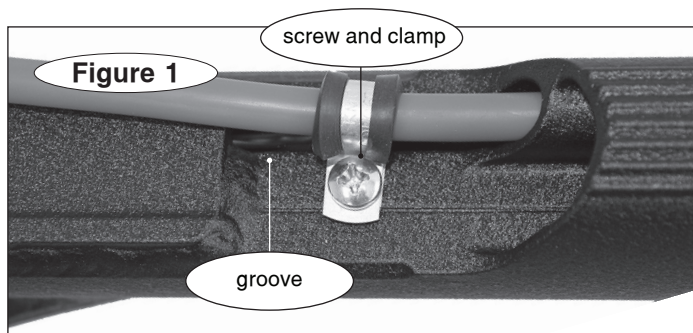
See second page for important safety definitions.

### Instructions

1. Remove the screw, split washer, and clamp (Figure 1).
2. Detach the 6-wire plug from the end of the cord.
3. Pull the cord until the shrink wrap around the LED wiring is exposed (see Figure 2), then cut the LED wiring.  
*NOTE: Ensure the LED wiring is as long as possible, with a minimum length of 3 inches.*
4. Remove the original power cord.
5. Insert the replacement power cord into the same channel as the original, ensuring it is oriented the same way and has sufficient slack.
6. Using the supplied heat-shrink butt connectors, attach the new LED wiring to the wiring cut in Step 3. Match the colors: brown to brown, green to green, yellow to yellow, and white to white (see Figure 3).  
*NOTE: These must be staggered, over a 3 inch area, in order to fit without issue.*
7. You must, once the new connections are made, before sealing them, plug the towbar into the vehicle wiring and test to make sure the lights and functions work as intended.
8. Seal the butt connectors with a heat gun to create a waterproof connection.
9. Rotate the power cord until the colored LED wiring aligns with the recessed groove (see Figure 1). Secure the power cord to the Nighthawk using the clamp, split washer, and screw removed in Step 1.
10. Attach the new 6-wire plug. Refer to the wiring diagrams on the following page.
11. Before towing, verify that the towed vehicle's lights function correctly in conjunction with the motorhome's lights.

### WARNING

Read all instructions before installing the product. Failure to understand how to install the product could result in property damage, personal injury or even death.



### CAUTION

Make certain that the towed vehicle's lighting corresponds to the motorhome's. Otherwise, drivers behind the towed vehicle will not be aware when the motorhome is braking or turning.



# Replacement Power Cord for Nighthawk Tow Bar

## INSTALLATION INSTRUCTIONS

#1676-MFX  
04/25  
RS

ROADMASTER, Inc.

6110 NE 127th Ave.

Vancouver, WA 98682

360-896-0407

www.RoadmasterInc.com

### IMPORTANT NOTICE!

#### Safety Definitions

These instructions contain information that is very important to know and understand. This information is provided for **safety** and to **prevent equipment problems**. To help recognize this information, observe the following symbols:

#### WARNING

**WARNING** indicates a potentially hazardous situation which, if not avoided, could result in property damage, serious personal injury, or even death.

#### CAUTION

**CAUTION** indicates a potentially hazardous situation which, if not avoided, may result in property damage, or minor or moderate personal injury.

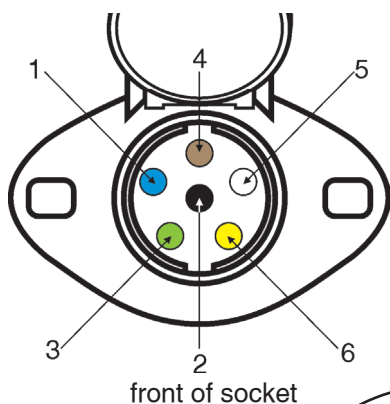
#### CAUTION

**CAUTION** used without the safety alert symbol indicates a potentially hazardous situation which, if not avoided, may result in property damage.

#### NOTE

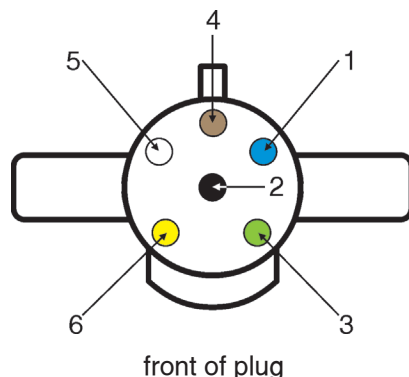
*Refers to important information and is placed in italic type. It is recommended that you take special notice of these items.*

### 6-wire socket and plug

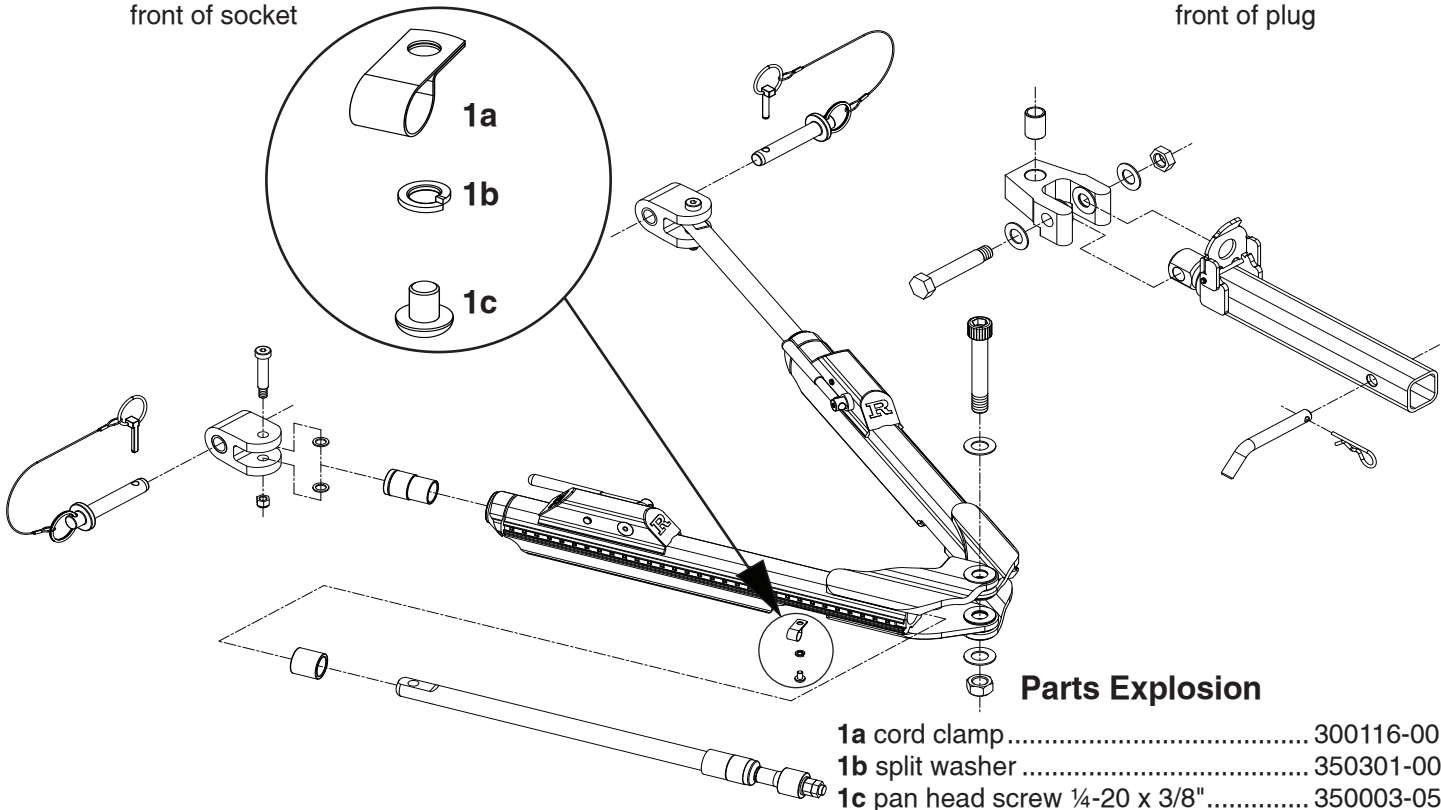


front of socket

Socket Pin Number	Wire Color	Motorhome/ Towed Vehicle
1	Blue	Brake monitor light
2	Black	Auxiliary/Charge
3	Green	Right Turn/Stop
4	Brown	Taillights
5	White	Ground
6	Yellow	Left Turn/Stop



front of plug



#### Parts Explosion

- 1a cord clamp ..... 300116-00
- 1b split washer ..... 350301-00
- 1c pan head screw 1/4-20 x 3/8" ..... 350003-05