



# Installation Instructions

Thank you for purchasing this anti-sway bar kit. Please read through these instructions before installation.

## Front Anti-Sway Bar Kit for Freightliner M2

part #1209-142  
1-3/4" diameter



*Note: This kit will only work on vehicles with a factory-installed front sway bar.*

## INTRODUCTION

Thank you for purchasing this anti-sway bar kit. This kit is designed to improve the handling characteristics of your Freightliner M2 by reducing the body roll and balancing the weight transfer during cornering. The anti-sway bar kit is engineered for long life and trouble-free performance.

All the hardware needed for installation is included in this kit. Refer to the PARTS LIST in these instructions to identify the parts.

## SUGGESTED TOOLS

The following tools are suggested to complete the installation procedures:

- General hand tools
- Torque wrench

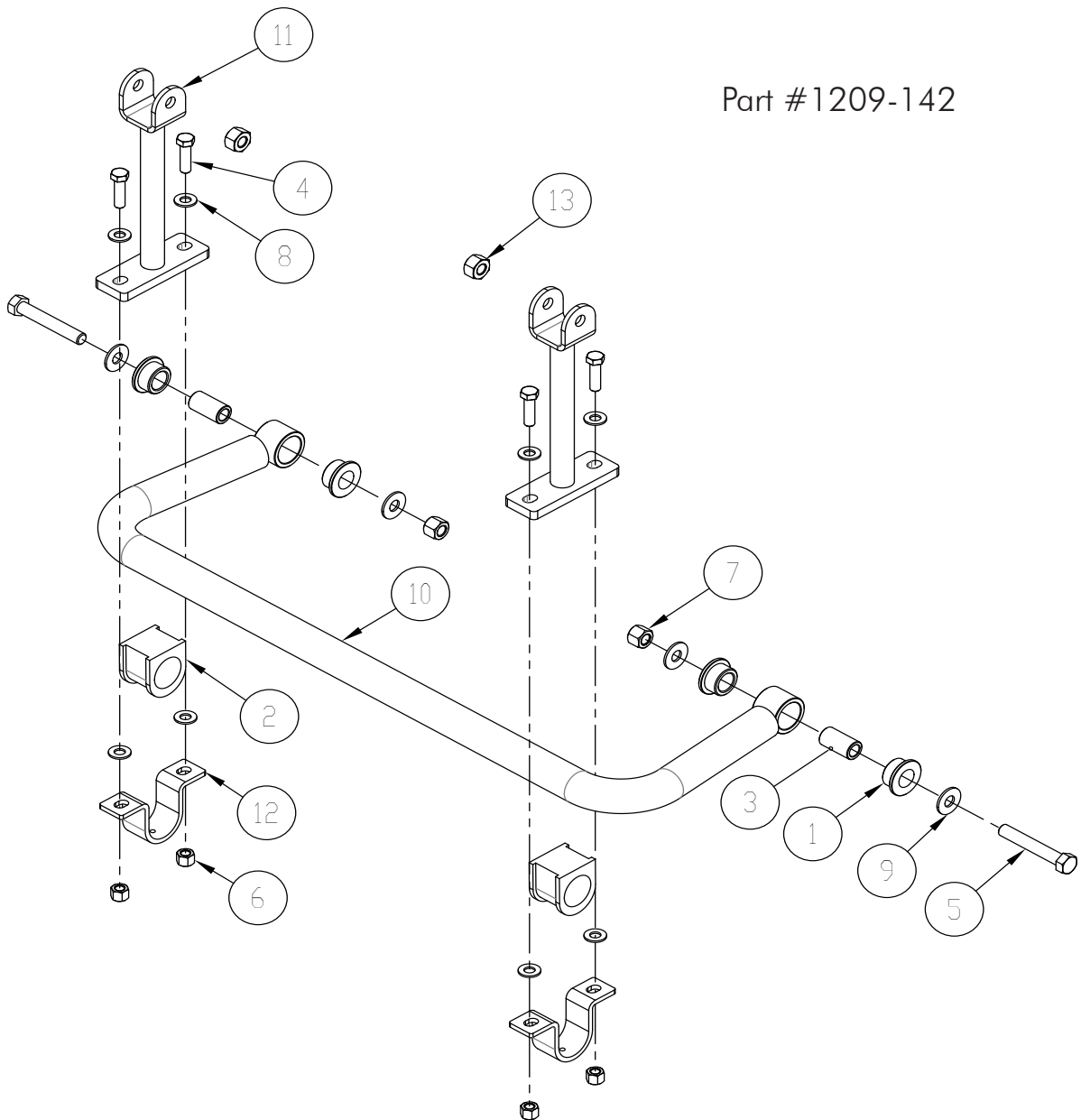
### **WARNING**

**Failure to follow these instructions can result in property damage, personal injury or even death.**

- If raising the vehicle to install the anti-sway bar, always support the vehicle with jack stands at both frame rails or at the rear axle before working underneath. Ensure that the jack stands are securely positioned, and are rated at or above the weight of the vehicle.
- The installer must read the instructions and use all bolts and parts supplied. Use only the parts supplied by ROADMASTER to install this kit.
- Minor modifications are sometimes necessary due to slight vehicle variations, even for the same year, make and model.
- Regardless of year, make and model, a wide range of options for specific applications may or may not interfere with the installation. It is the installer's responsibility to make certain that equipment is not damaged once the suspension solution travels through the full range of motion. Failure to ensure adequate clearance could result in non-warranty property damage, personal injury or even death.
- If running changes were made by the manufacturer after this kit was designed, there may be weldments, braces, gussets, or other structural items which interfere with the installation. It is the installer's responsibility to allow for these running changes without sacrificing the structural integrity of the anti-sway bar. Failure to securely fasten the anti-sway bar could result in property damage, personal injury or even death.
- ROADMASTER will not be responsible for any damage or injury resulting from any modification or alteration.
- Check ALL the fasteners for tightness before and after road testing the vehicle.
- Do not use this document for custom fabrication, as it may not show all parts or structural components.
- Do not use an air impact wrench when re-installing bolts, as stripped threads may result.
- This anti-sway bar is only warranted for the original installation. Installing a used anti-sway bar on another vehicle is not recommended and will void the warranty.

# PARTS LIST

Part #1209-142



ITEM	QTY.	PART	DESCRIPTION
1	4	205209-00	BUSHING
2	2	205220-20	BUSHING
3	2	205503-00	BUSHING SLEEVE
4	4	350096-80	1/2-13 x 1 3/4" GRADE 8 BOLT
5	2	350158-50	5/8-11 x 4" GRADE 8 BOLT
6	4	350259-00	1/2-13 NYLON INSERT LOCK NUT
7	2	350263-00	5/8-11 NYLON INSERT LOCK NUT
8	8	350308-20	1/2" HARDENED WASHER
9	4	350347-00	9/16" FLAT WASHER
10	1	580532-00	ANTI-SWAY BAR
11	2	B1000	END LINK
12	2	B141	BUSHING CLAMP
13	2	350280-00	5/8-11 LOCK NUT
14	1	400011-30	AQUALUBE

# INSTALLATION

The following instructions must be followed in the order listed to ensure a proper installation and to preserve the ROADMASTER warranty.

## 1. Remove the factory end links.

Find the factory end links and remove them from the frame bracket. Note: Retain the bolts and washers, as you will reinstall them later on. Also, if the vehicle is so equipped, use caution when removing the retaining clip that is attached to the factory bolt, as you will be reusing it. To access one of the bolts on the passenger side, you will need to remove the bottom two 9/16" bolts and nuts from the washer bottle (Figure 1).

## 2. Install the new end links.

Locate the supplied B1000 end links and install them to the frame bracket at this time using the end link bolts you removed in step 1 and secure them with the included 5/8" lock nuts (Figure 2). Leave the assembly finger tight for now.

## 3. Prepare and install the anti-sway bar.

Lube the inside of the D-shaped anti-sway bar bushing (205222-20) with the provided grease. Place the bushings on the bar. Install the B141 bushing clamps over the bushing. Attach it to the bottom of the end link using the supplied bolts 1/2" x 1 3/4" bolts, 9/16" cut washers and 1/2" nuts (Figure 3). Tighten to 57 lb-ft.

Swing the ends of the anti-sway bar up to the OEM axle brackets. Attach the bar to the brackets using 5/8" x 4" bolts, 9/16" flat washers and 5/8" nuts (Figure 4). Note: A dead-blow hammer or similar may assist with the installation, due to a tight fit between the OEM tabs.

## 4. Final tightening of all bolts.

Tighten the anti-sway bar-to-OEM axle bracket bolts to 112 lb-ft. Now, tighten the axle bracket U-bolts and end link bolts to factory specs.

## 5. Recheck all fasteners and then test drive. Recheck fasteners after the test drive.

Figure 1

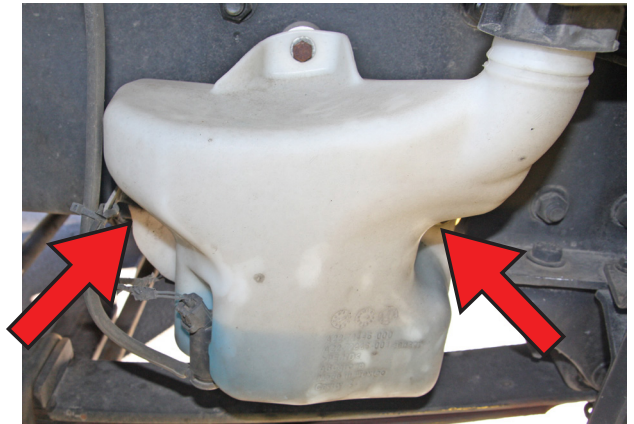


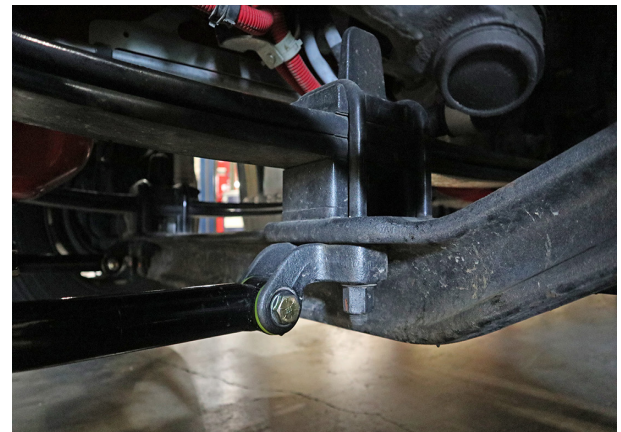
Figure 2



Figure 3



Figure 4



# INSTALLATION

## **WARNING**

After road testing, re-check all fasteners for proper tightness — if a fastener has worked loose or fallen off, re-tighten or replace it. Without all kit components properly tightened or in place, the anti-sway bar will not stabilize the vehicle at full capacity, which may cause reduced cornering ability or other reductions in vehicle handling or performance.

Failure to follow these instructions may result in property damage, personal injury or even death.

## **WARNING**

### **The anti-sway bar is not a load-bearing component**

Do not tow or hoist the vehicle using the anti-sway bar or its mounting brackets as attachment points. The anti-sway bar is not designed to carry the weight of the vehicle and may collapse, which will damage the anti-sway bar components, the suspension, or other components. The vehicle will detach or fall, which may cause severe personal injury.

Failure to follow these instructions may result in property damage, personal injury or even death.