

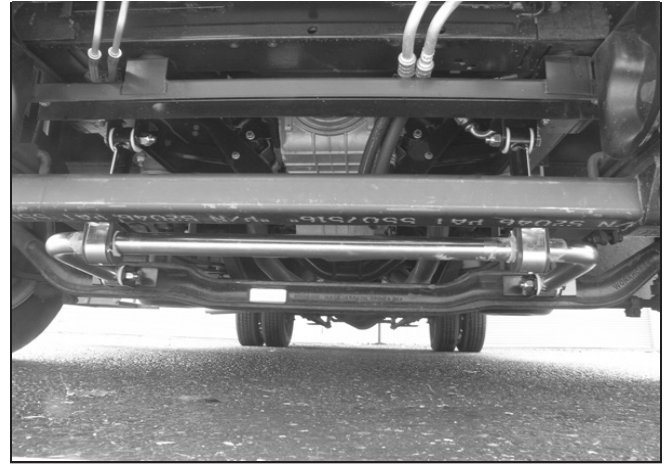


Installation Instructions

Thank you for purchasing this anti-sway bar kit. Please read through these instructions before installation.

Front Anti-Sway Bar TruTrac Bar Combo Kit for Workhorse W20/22/24

part #1259-106
1-5/8" diameter



INTRODUCTION

Thank you for purchasing this sway bar/trac bar combo kit. This kit is designed to improve the handling characteristics of your Workhorse by reducing the body roll and balancing the weight transfer during cornering. The sway bar kit is engineered for long life and trouble-free performance. For maximum suspension control, use this kit along with our rear sway bar kit.

All the hardware needed for installation is included in this kit. Refer to the PARTS LIST in these instructions to identify the parts.

SUGGESTED TOOLS

The following tools are suggested to complete the installation procedures:

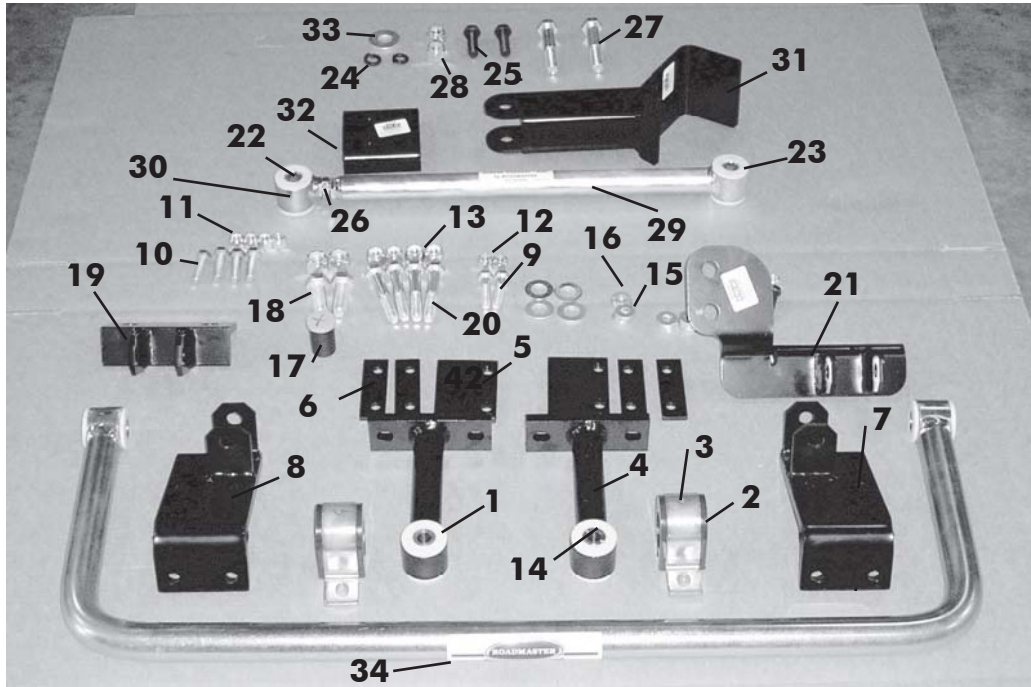
- General hand tools
- 1/8", 1/2" drill bits
- 1/2" drill
- Torque wrench

! WARNING

Failure to follow these instructions can result in property damage, personal injury or even death.

- If raising the vehicle to install the anti-sway bar, always support the vehicle with jack stands at both frame rails or at the rear axle before working underneath. Ensure that the jack stands are securely positioned, and are rated at or above the weight of the vehicle.
- The installer must read the instructions and use all bolts and parts supplied. Use only the parts supplied by ROADMASTER to install this kit.
- Minor modifications are sometimes necessary due to slight vehicle variations, even for the same year, make and model.
- Regardless of year, make and model, a wide range of options for specific applications may or may not interfere with the installation. It is the installer's responsibility to make certain that equipment is not damaged once the suspension solution travels through the full range of motion. Failure to ensure adequate clearance could result in non-warranty property damage, personal injury or even death.
- If running changes were made by the manufacturer after this kit was designed, there may be weldments, braces, gussets, or other structural items which interfere with the installation. It is the installer's responsibility to allow for these running changes without sacrificing the structural integrity of the anti-sway bar. Failure to securely fasten the anti-sway bar could result in property damage, personal injury or even death.
- ROADMASTER will not be responsible for any damage or injury resulting from any modification or alteration.
- Check ALL the fasteners for tightness before and after road testing the vehicle.
- Do not use this document for custom fabrication, as it may not show all parts or structural components.
- Do not use an air impact wrench when re-installing bolts, as stripped threads may result.
- This anti-sway bar is only warranted for the original installation. Installing a used anti-sway bar on another vehicle is not recommended and will void the warranty.

PARTS LIST



Part #1259-106

Part #	Description	Qty	Part #	Description	Qty
1	205209-00 Poly Bushing	8	18	350096-80 1/2" x 1-3/4" bolt GD8 Zn	4
2	205222-10 Poly Bushing	2	19	B426 Bracket axle	1
3	B141 U-clamp	2	20	350163-00 5/8" Capscrew	4
4	B414 Droplink W22, Front	2	21	B595 Bracket, combo axle	1
5	B419 Bracket Clamp W22	2	22	205504-00 Sleeve	2
6	B423 Bracket Shim W22	4	23	205209-00 Bushing	4
7	B424 Bracket Frame Passenger	1	24	350313-00 5/8" Lock Washer	1
8	B425 Bracket Frame Driver's	1	25	350452-00 5/8" Hex bolt	1
9	350097-00 Bolt, 1/2" x 2"	2	26	350264-20 3/4" Jam Nut	1
10	350076-80 Bolt, 7/16" x 2"	4	27	350185-00 3/4" Capscrew	2
11	350256-02 Locknut, 7/16"	4	28	350265-00 3/4" Locknut	2
12	350259-00 Nut, 1/2"	6	29	B531 Tube Panhard Tru Trac	1
13	350263-00 Locknut, 5/8"	4	30	B532 Rod End	1
14	205503-00 Sleeve	4	31	B528 Bracket Frame	1
15	350304-80 Washer, 3/8"	8	32	B529 Frame Pinch Plate	1
16	350308-20 Washer, 1/2"	12	33	350314-00 3/4" Cut Washer	1
17	400011-30 Aqualube	1	34	580055-00 Anti-sway bar	1

* Not shown

INSTALLATION

The following instructions must be followed in the order listed to ensure a proper installation and to preserve the ROADMASTER warranty.

1. Install axle bracket

Remove the front 2 U-bolt nuts on each side. Install B426 on the passenger side and install the B595 on the driver side. Do not tighten at this time.

2. Install the driver's side frame bracket.

Note: for the 2007 chassis the rear steering box has been moved. We have supplied you with a $\frac{3}{4}$ " bolt in place of the 30mm bolt. Drill a $\frac{3}{4}$ " hole and mount the bracket.

Locate and remove 30mm bolt from the rear steering box bracket inside the driver's side frame rail. Use this bolt to attach the driver's side frame bracket (using front hole) with tabs closest to front of chassis. Torque nut back to factory specs. Drill a $\frac{1}{2}$ " hole through frame rail and install using $\frac{1}{2}$ " x 2" bolt (350097-00) and secure with washer and nut. Torque to 80-100 ft.-lbs. Assemble spacer plate and clamp plate as shown using $\frac{7}{16}$ " bolts, washers and nuts. Tighten the clamp bolts to 40-50 ft.-lbs.

3. Install passenger side frame bracket.

Passenger side bracket is directly opposite driver side bracket. Locate $\frac{7}{8}$ " hole inside passenger side frame rail. Install passenger side frame bracket inside frame rail using one $\frac{3}{4}$ " bolt (350386-00); secure with washer and nut. Torque to 80-100 ft.-lbs. Drill a $\frac{1}{2}$ " hole through frame rail and install second bolt (350097-00, 1-2" x 2"). Secure with washer and nut; torque to 80-100 ft.-lbs. Assemble spacer plate and clamp plate as shown using $\frac{7}{16}$ " bolts, washers and nuts. Tighten clamp bolts to 40-50 ft.-lbs. (Figure 1).

4. Mount the bar.

Attach the anti-sway bar to the axle plates using $\frac{5}{8}$ " bolts (350163-00). Tighten to 30-45 ft.-lbs.(Figure 2).

5. Assemble and connect the drop links.

Install the bushings (205209-00) and sleeves (205503-00) into the drop links. Attach to the frame brackets on each side. Tighten to 30-45 ft.-lbs. (Figure 3).

6. Connect the anti-sway bar to the drop links.

Lubricate the inside of the anti-sway bar bushings with the provided grease. Install the anti-sway bar bushings and U-clamps on the bar. Connect the anti-sway bar to the drop links using the bolts (350096-80) provided. Torque to 60-75 ft.-lbs. (Figure 4).

7. Tighten the remaining fasteners.

Tighten the axle clamps to the factory torque specifications.

Figure 1

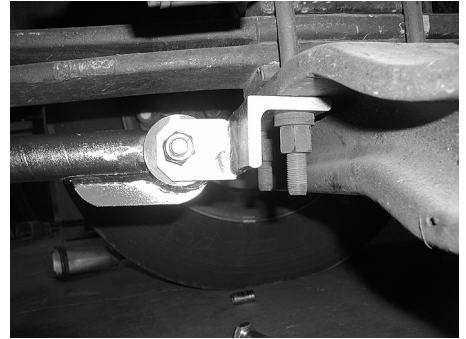


Figure 2



Figure 3

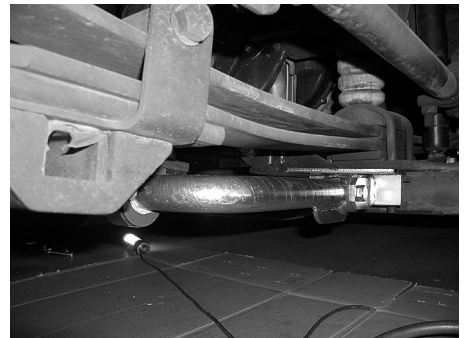
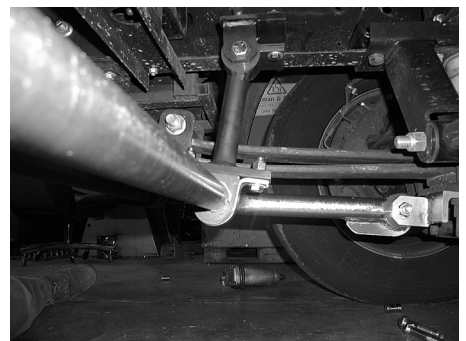


Figure 4



INSTALLATION

Tru Trac bar Installaion

1. Under normal circumstances, this installation will take 30-40 minutes. Before starting the installation, prepare the motorhome by parking it on a level surface and not on jacks.
2. Begin by removing the nuts on the front u-bolt on the driver's side of the front axle. Place the axle bracket on the u-bolt as in figure 1, and replace and torque the nuts that were previously removed to 140-150 ft.-lbs.
3. On W16 and W18 models, remove the factory bolt attached to the cross member. Then, place the frame bracket on the frame and reattach the factory bolt. Now, place the large frame bracket on the outside of the passenger side frame rail in front of the axle, and loosely secure it with the inner bracket and supplied bolts (Figure 2). *Note:* the W16 and the W18 models only use the 1/2 inner bracket. Do not tighten the mounting bolts at this time. Place the adjustable bar with the stationary end in the frame bracket and insert the bolt from the rear. Adjust the length of the bar so that you can put the adjustable end of the bar into the axle bracket, but do not insert bolt. At this point, make sure the bar slides freely in the axle bracket. If it doesn't, slide the frame bracket forward or back until it does. When the bar easily fits in the axle bracket, tighten the frame bracket mounting bolts.
4. Now, insert the end bolts from the rear. Make sure both end bolts face toward the front of the coach with the nuts on the front side of the bar. Adjust the bar until both end bolts easily slide through the bracket and the bar. Tighten both end bolts. These bolts are to be tightened only enough so that the bolts are snug in the bracket, but do not put pressure on the ends of the bar. The last step is to tighten the jam nut on the bar.
5. Check to make sure that no wires, hoses, or lines are being obstructed. The installation is now complete, and should look like Figure 3.
6. Road test and re-check installation. Recheck all nuts and bolts for tightness. After the first 1,000 miles or so, check to make sure the nuts and bolts have not loosened.

Figure 1

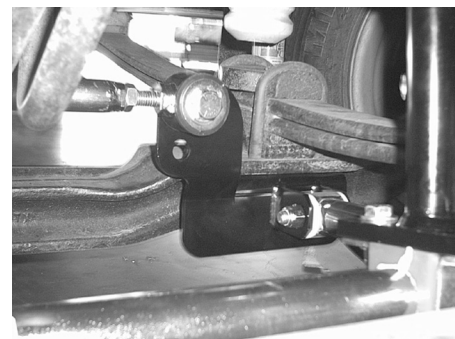


Figure 2



Figure 3



WARNING

After road testing, re-check all fasteners for proper tightness — if a fastener has worked loose or fallen off, re-tighten or replace it. Without all kit components properly tightened or in place, the anti-sway bar will not stabilize the vehicle at full capacity, which may cause reduced cornering ability or other reductions in vehicle handling or performance.

Failure to follow these instructions may result in property damage, personal injury or even death.

WARNING

The anti-sway bar/Tru Trac bar is not a load-bearing component

Do not tow or hoist the vehicle using the anti-sway bar or its mounting brackets as attachment points. The anti-sway bar is not designed to carry the weight of the vehicle and may collapse, which will damage the anti-sway bar components, the suspension, or other components. The vehicle will detach or fall, which may cause severe personal injury.