

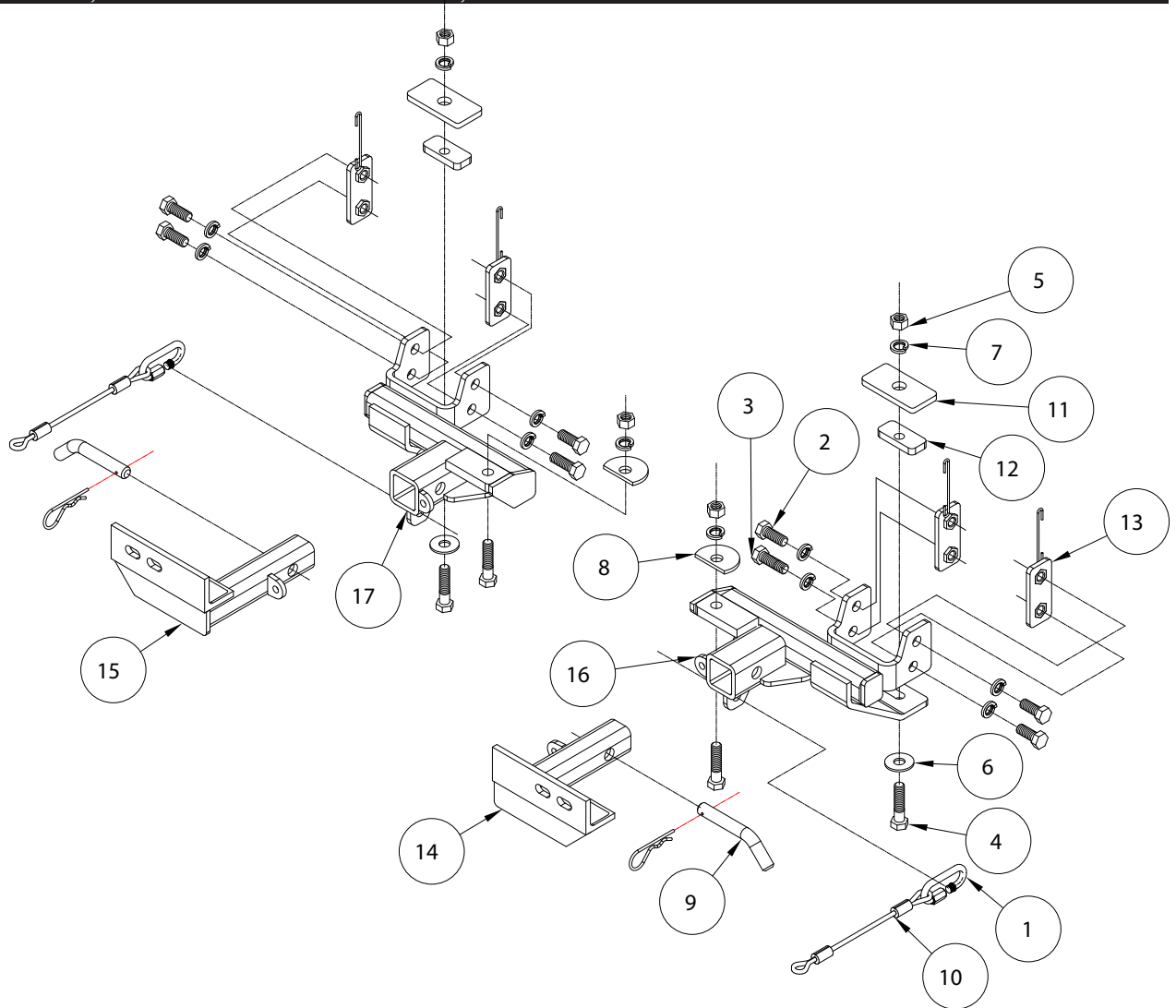


# BASEPLATE KIT INSTALLATION INSTRUCTIONS

**KIT# 1438-1**

11/12/19  
KS

ROADMASTER, Inc. 6110 NE 127th Ave. Vancouver, WA 98682 360-896-0407 fax 360-735-9300 www.roadmasterinc.com



ITEM	QTY	NAME	MATERIAL
1.....2.....		QUICK LINK .....	200008-00
2.....6.....		1/2" x 1 1/4" BOLT .....	350094-00
3.....2.....		1/2" X 1 1/2" BOLT .....	350095-00
4.....4.....		1/2" x 2" BOLT .....	350097-00
5.....4.....		1/2" NUT .....	350258-00
6.....6.....		1/2" FLAT WASHER .....	350308-00
7.....12.....		1/2" LOCK WASHER .....	350309-00
8.....2.....		1/2" PLATE WASHER.....	A-002687
9.....2.....		DRAW PIN W/ CLIP.....	357035-00
10.....2.....		8" SAFETY CABLE.....	650646-08
11.....2.....		1 1/2" x 3" BACKING PLATE .....	A-000185
12.....2.....		3/8" x 1 1/8" x 2 1/2" SPACER PLATE .....	A-003068
13.....4.....		1 1/2" x 3 1/2" THREADED BACKING PLATE W/ ROD .....	C-001835
14.....1.....		DRIVER SIDE ARM .....	C-001897
15.....1.....		PASSENGER SIDE ARM .....	C-001898
16.....1.....		DRIVER SIDE RECEIVER.....	C-001950
17.....1.....		PASSENGER SIDE RECEIVER .....	C-001951



# BASEPLATE KIT INSTALLATION INSTRUCTIONS

**KIT# 1438-1**

11/12/19  
KS

ROADMASTER, Inc. 6110 NE 127th Ave. Vancouver, WA 98682 360-896-0407 fax 360-735-9300 www.roadmasterinc.com

This bracket kit is one of our XL series, which allows the visible front portion of the brackets to be easily removed (Fig.A and Fig.B). The kit consists of two main receiver braces, removable front braces and a hardware pack.

The main receiver brace mounts to the frame rails and bumper support on each side. The removable front braces insert into the receivers on each side and are secured with draw pins.

Before starting the installation, lay out the kit components in order, as they will be used. This will give you a visual idea of how the components work, and will also confirm that everything is present and accounted for.



**IMPORTANT:** All baseplates **must** be assembled with all the bolts left loose for final adjustment and positioning (before tightening) unless otherwise instructed. All bolts **must** be torqued for proper strength. If more than one bolt is used per fastening point, the diagram may only show one. Use flat washers over all slotted holes and lock washers on all fasteners.

## WARNING

Failure to heed these warnings or follow the installation instructions may result in a voided warranty, loss of towed vehicle, personal injury or death.

- Do not weld or modify this baseplate or its components. Welding or modification will void the warranty.
- Do not use this document as a basis to design/fabricate a baseplate, as it may not show all parts or structural components.
- We strongly recommend professional installation.
- If the towed vehicle has been in an accident, it must be properly repaired before attaching the baseplate. Do not install the baseplate if any structural frame damage is found.
- The installer must use all bolts and parts supplied. If running changes were made by the vehicle manufacturer after this kit was designed, some bolts or other fasteners may no longer be the correct size. It is the installer's responsibility to verify this kit is securely fastened to the vehicle.
- Use Loctite® Red on all bolts used to secure this baseplate. Torque all bolts to the specifications found at the end of these instructions. Do not over-torque the bolts or failure may occur.
- The installer must inspect the baseplate to ensure adequate clearance, particularly around hoses, air conditioner lines, radiators, etc. or non-warranty failure may result.
- Roadmaster manufactures many styles of baseplates. If your baseplate has removable arms, they must be removed before driving the vehicle, unless the arms can be pinned or padlocked in place. If not secured, the arms could vibrate out.
- Some motorhome chassis have such a tight turning radius that you can damage your motorhome, towed vehicle, tow bar or baseplate while turning sharply. Before getting on the road, test your turning radius in an empty parking lot. Turning too sharply could result in non-warranty damage to your towing system, motorhome and/or towed vehicle.
- Do not back up with the towed vehicle attached or non-warranty damage will occur to your towing system or vehicles.
- The safety cables must connect the towing vehicle to the towed vehicle frame to frame, with the cables crossed, with enough slack for sharp turns. See cable instructions for proper routing. Failure to do so will result in non-warranty damage and/or the loss of the towed vehicle.
- This kit is designed for use with ROADMASTER tow bars and ROADMASTER adapters only. Using this kit with other brands, without an approved ROADMASTER adapter, may result in non-warranty damage or injury.
- Receiver extensions and out-of-level towing situations of 3 inches or more. This can cause the system to swing much higher and lower, causing excessive strain on the tow bar, baseplate and frame. That can cause the towing system to fail, causing property damage, personal injury or even death. If you must use a receiver extension or drop hitch to tow, it will reduce your receiver's weight capacity by 1/3 to avoid damaging your system. Never use more than one extension and/or drop hitch, as this will void your warranty.
- Every 3,000 miles, the owner must inspect all mounting points for cracks or fatigue, and check the fasteners for proper torque, according to the bolt torque requirements chart on the last page of these instructions.
- The owner must follow the vehicle manufacturer's instructions to prepare the vehicle for towing. Failure to do so may cause severe damage to the vehicle.
- This baseplate is only warranted for the original installation. Installing a used baseplate on another vehicle is not recommended and will void the warranty.

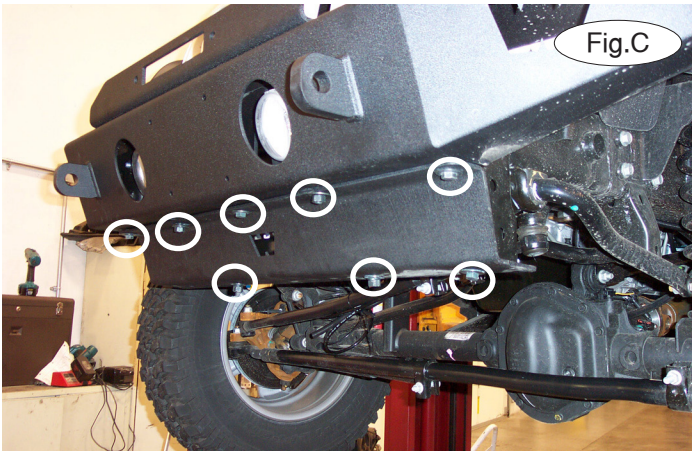


# BASEPLATE KIT INSTALLATION INSTRUCTIONS

**KIT# 1438-1**

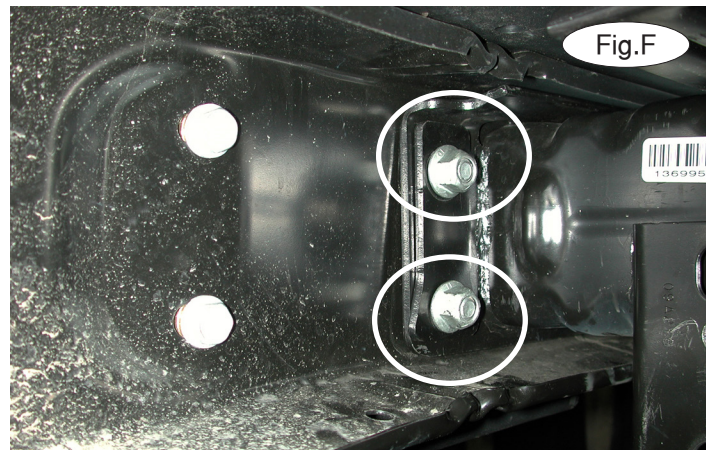
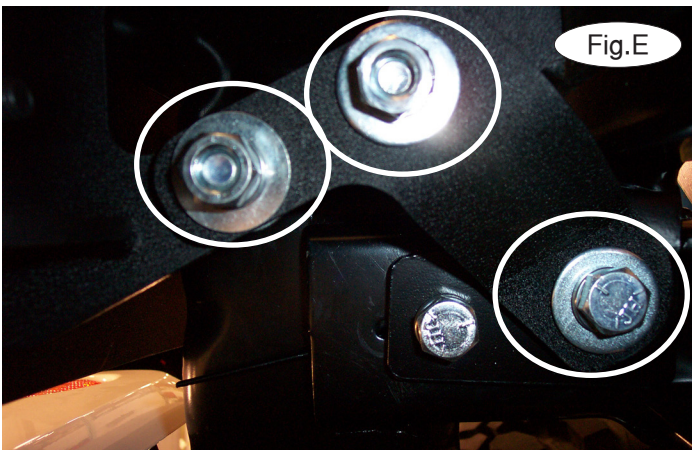
11/12/19  
KS

ROADMASTER, Inc. 6110 NE 127th Ave. Vancouver, WA 98682 360-896-0407 fax 360-735-9300 www.roadmasterinc.com



1. **Important:** please use all supplied bolts and parts and read all instructions carefully before beginning this installation. The majority of questions you may have can be answered within the text, and proper installation will ensure safe and secure travel. Now, begin the installation by removing eight 5/8" (head) bolts attaching the skid plate to the bumper and lower frame support (Fig.C).

2. Pull the fog lights back and set them on top of the subframe (Fig.D).



3. On each side, remove the bumper support bracket by removing one 15/16" nut and two 11/16" nuts (Fig.E – driver's side). *Note:* these parts will be used in steps 9 and 10.

4. On each side, remove four 5/8" (head) bolts attaching the bumper to the end of the frame rail. *Note:* Figure F only shows two of the four bolts. The remaining two bolts are located to the inside of the frame support.



# BASEPLATE KIT INSTALLATION INSTRUCTIONS

**KIT# 1438-1**

11/12/19  
KS

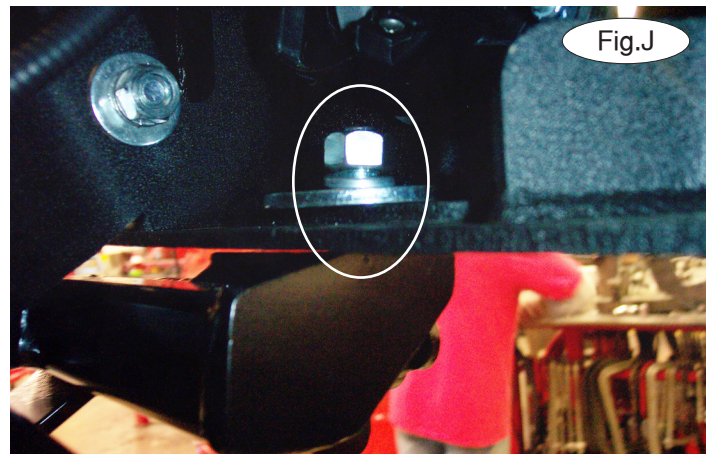
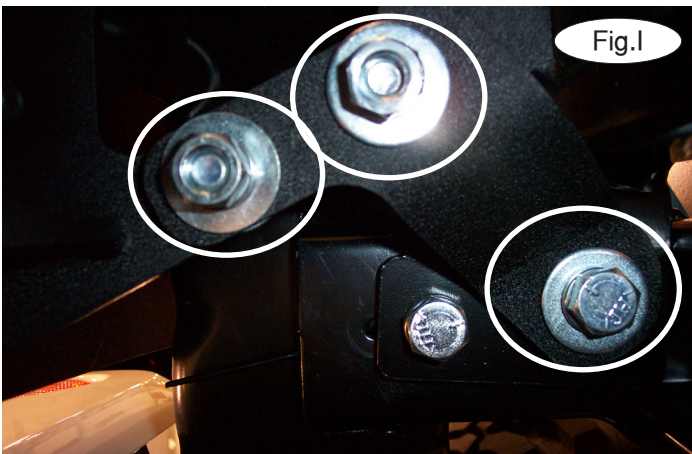
ROADMASTER, Inc. 6110 NE 127th Ave. Vancouver, WA 98682 360-896-0407 fax 360-735-9300 www.roadmasterinc.com



5. Working on the driver's side, place the main receiver brace over the end of the frame rail. Place one of the supplied  $3/16" \times 1\frac{1}{2}" \times 3\frac{1}{2}"$  threaded backing plates with wire through the opening to the inside edge of the frame rail. Using one of the four supplied  $\frac{1}{2}" \times 1\frac{1}{4}"$  bolts and  $\frac{1}{2}"$  lock washer, bolt through the top inside bolt hole in driver's side main receiver brace, frame rail and into the threaded backing plate with wire.

6. Repeat step 5 for the passenger side (Fig.G).

7. Replace the bumper and the eight  $5/8"$  (head) bolts that you removed in step 4 (Fig.H).



8. Working on the driver's side, and using one of the supplied  $\frac{1}{2}" \times 1\frac{1}{2}"$  bolts, and  $\frac{1}{2}"$  flat washer and lock washer, bolt through the bumper support bracket and the lower mounting point of the main receiver brace, the frame rail and into the backing plate. *Note:* the bumper support bracket must be mounted to the INSIDE of the bumper mount, which is opposite from how you removed it in step 3.

9. Repeat step 8 for the passenger side of the vehicle.

10. Using the hardware you removed in step 3, bolt the bumper support bracket to the bumper (Fig.I).

11. Now, torque the bolts attaching the main receiver brace to the bumper to the bolt torque requirements found at the end of these instructions.

12. Working on the driver's side, and using one of the supplied  $\frac{1}{2}" \times 2"$  bolts, bolt up through the front mounting point of the brace, bumper, and fog light bracket. Place a  $\frac{1}{2}"$  clipped plate washer over the top of the bolt, and finish with a  $\frac{1}{2}"$  lock washer and nut (Fig.J). Torque these bolts to the bolt torque requirements found at the end of these instructions.

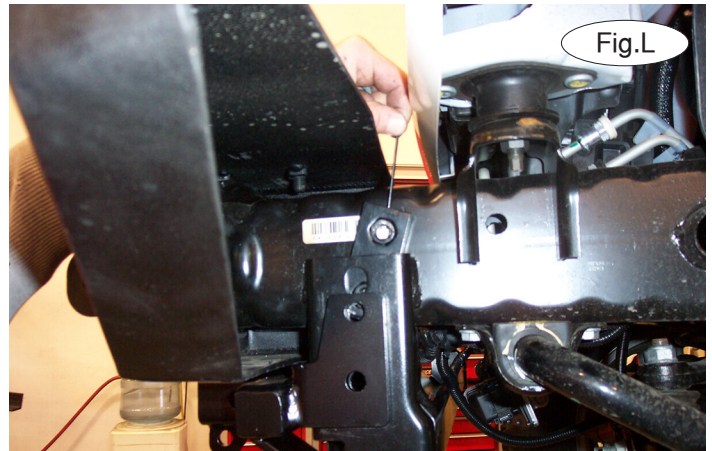
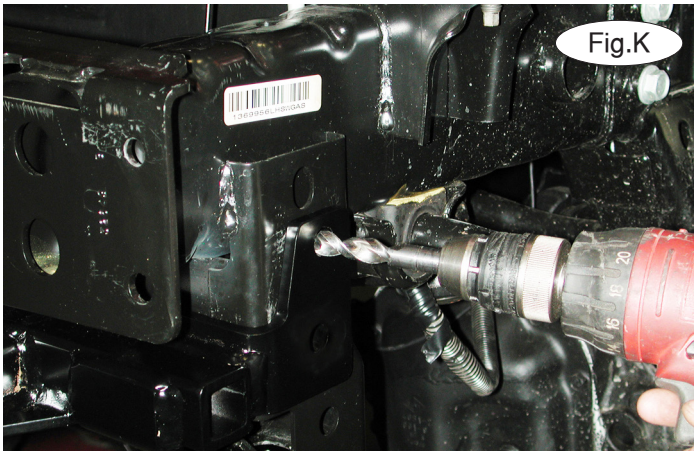


# BASEPLATE KIT INSTALLATION INSTRUCTIONS

**KIT# 1438-1**

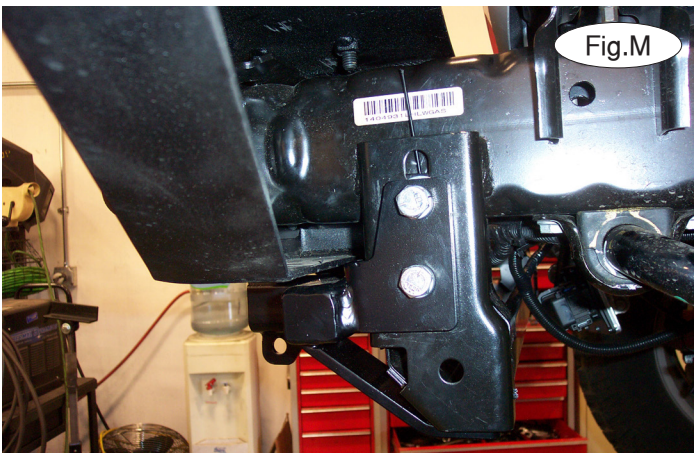
11/12/19  
KS

ROADMASTER, Inc. 6110 NE 127th Ave. Vancouver, WA 98682 360-896-0407 fax 360-735-9300 www.roadmasterinc.com



13. Using the upper outside mounting point of the main receiver brace as a template, drill a  $\frac{1}{2}$ " hole through the side of the frame support (Fig.K).

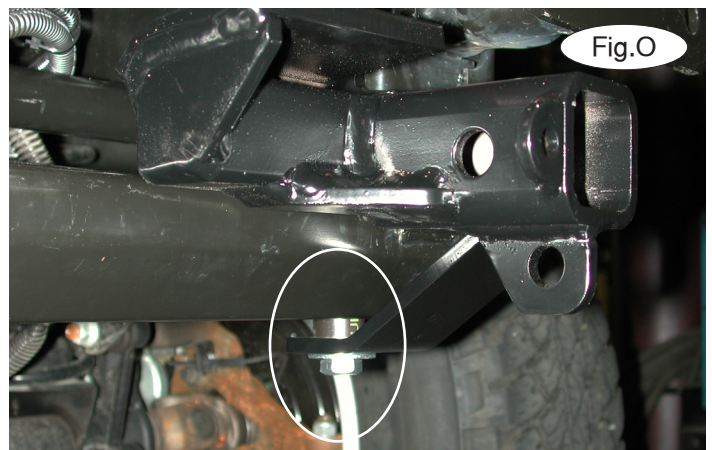
14. Insert one of the supplied  $\frac{3}{16}$ " x  $1\frac{1}{2}$ " x  $3\frac{1}{2}$ " threaded backing plates with wire in the opening to the inside of the frame (Fig.L) and bolt it into place using the two supplied  $\frac{1}{2}$ " x  $1\frac{1}{4}$ " bolts and two  $\frac{1}{2}$ " lock washers (Fig.M). *Note:* due to manufacturing variances, there may be a slight gap between the outside mounting point and the frame. If this is the case, use an additional  $\frac{1}{2}$ " flat washer as a shim for each hole.



15. Repeat steps 12 through 14 for the passenger side.

16. Using the lower mounting point of the main receiver brace as a template, drill a  $\frac{1}{2}$ " hole through the frame support on the passenger side only (Fig.N).

17. Working on the driver's side, place a  $\frac{3}{8}$ " x  $1\text{-}1/8$ " x  $2\frac{1}{2}$ " spacer between the brace and the frame. Place one of the supplied  $\frac{1}{2}$ " flat washers over one of the  $\frac{1}{2}$ " x 2" bolts and bolt up through the main receiver brace, spacer, and frame support. Now, place one of the  $\frac{3}{16}$ " x  $1\frac{1}{2}$ " x 3" backing plates over the top of the bolt and finish with a  $\frac{1}{2}$ " lock washer and nut (Fig.O).





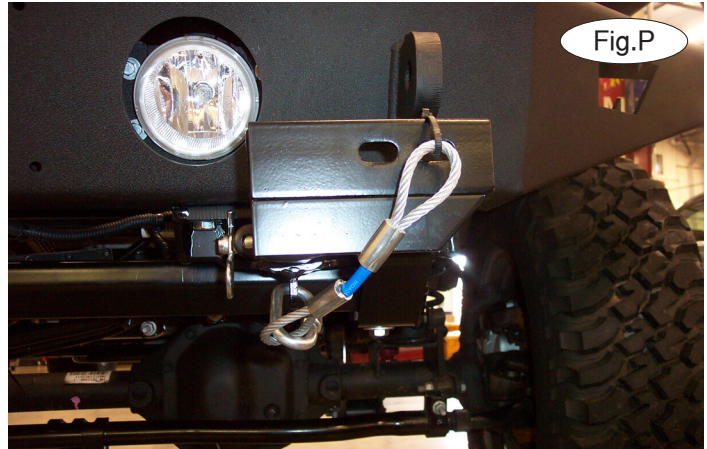
# BASEPLATE KIT INSTALLATION INSTRUCTIONS

**KIT# 1438-1**

11/12/19  
KS

ROADMASTER, Inc. 6110 NE 127th Ave. Vancouver, WA 98682 360-896-0407 fax 360-735-9300 www.roadmasterinc.com

18. Repeat step 17 for the passenger side.
19. Now, tighten all bolts to the bolt torque requirements found at the end of this document. *Note:* the skid plate can either be trimmed, or left off.
20. Use a pair of pliers to snap the wires off the four backing plates you installed in steps 5 and 14.
21. Insert the removable front bracket arms into the front receiver braces (Fig.P), and secure them in place with the supplied 5/8" draw pins and spring pins.
22. Attach the 8" safety cables with the cable connectors (Q-Links) to the front of the receiver braces.
23. Attach the ends of the safety cables to the tow vehicle's safety cables.
24. Install the tow bar to the mounting bracket according to the manufacturer's instructions.



## BOLT TORQUE REQUIREMENTS

Note: The torque values represented below are intended as general guidelines. Torque requirements for specific applications may vary. Roadmaster does not warrant this information to be accurate for all applications and disclaims all liability for any claims or damages which may result from its use.

### STANDARD BOLTS

Thread Size	Grade	Torque
5/16.....	5.....	13 ft./lb.
3/8.....	5.....	23 ft./lb.
7/16.....	5.....	37 ft./lb.
1/2.....	5.....	56 ft./lb.
5/8.....	5.....	150 ft./lb.

### METRIC BOLTS

Thread Size	Grade	Plated / Unplated
8mm-1.0 .....	8.8 .....	20 ft./lb. 18 ft./lb.
8mm-1.25 .....	8.8 .....	19 ft./lb. 18 ft./lb.
10mm-1.25 .....	8.8 .....	38 ft./lb. 36 ft./lb.
10mm-1.5 .....	8.8 .....	37 ft./lb. 35 ft./lb.

### METRIC BOLTS

Thread Size	Grade	Plated / Unplated
12mm-1.25 .....	8.8 .....	70 ft./lb. 65 ft./lb.
12mm-1.5 .....	8.8 .....	66 ft./lb. 61 ft./lb.
12mm-1.75 .....	8.8 .....	65 ft./lb. 60 ft./lb.
14mm-2.0 .....	8.8 .....	104 ft./lb. 97 ft./lb.

All illustrations and specifications contained herein are based on the latest information available at the time of publication approval. ROADMASTER, INC. reserves the right to make changes at any time without notice in material, specification and models or to discontinue models.