



# BASEPLATE KIT INSTALLATION INSTRUCTIONS

**KIT# 4428-3**

10/13/22  
KS

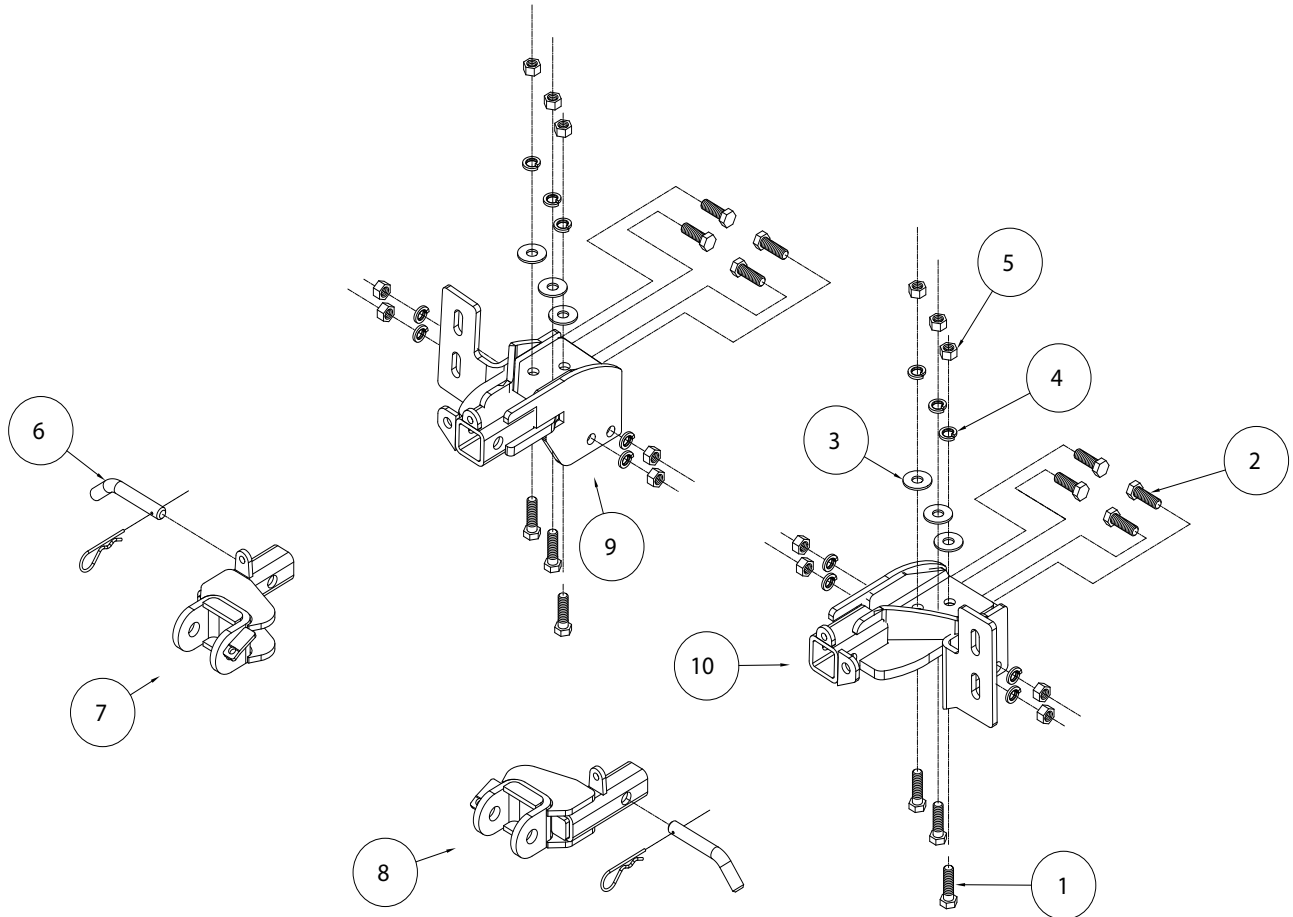
ROADMASTER, Inc. 6110 NE 127th Ave. Vancouver, WA 98682 360-896-0407 fax 360-735-9300 www.roadmasterinc.com

### Important

Note: This baseplate will not accommodate the Guardian rock shield, some models of the Tow Defender, Stowaway or any StowMaster tow bar.

### ⚠ WARNING

Only for use with tow bars rated at or above 10,000 lbs. GVWR. Using a lower rated tow bar may result in non-warranty failure, property damage, personal injury or death.



ITEM	QTY	NAME	MATERIAL
1.....	6.....	1/2" x 1 3/4" BOLT .....	350096-00
2.....	8.....	1/2" x 1 1/2" BOLT .....	350095-00
3.....	6.....	1/2" FLAT WASHER .....	350308-20
4.....	14.....	1/2" LOCK WASHER.....	350309-00
5.....	14.....	1/2" HEX NUT.....	350258-00
6.....	2.....	5/8" DRAW PIN W/ CLIP .....	357035-00
7.....	1.....	PASSENGER SIDE ARM .....	C002181
8.....	1.....	DRIVER SIDE ARM .....	C002180
9.....	1.....	PASSENGER SIDE RECEIVER .....	C002177
10.....	1.....	DRIVER SIDE RECEIVER.....	C002174
11.....	1.....	ZIPTIE .....	300140-10



# BASEPLATE KIT INSTALLATION INSTRUCTIONS

**KIT# 4428-3**

10/13/22  
KS

ROADMASTER, Inc. 6110 NE 127th Ave. Vancouver, WA 98682 360-896-0407 fax 360-735-9300 www.roadmasterinc.com

This bracket kit is one of our MX series, which allows the visible front portion of the brackets to be easily removed (Fig.A and Fig.B). The kit consists of the main receiver brace, removable front braces and a hardware pack.

The main receiver brace mounts to the front frame and bumper core on each side. The removable front braces insert into the receivers on each side and are secured with draw pins.

Before starting the installation, lay out the kit components in order, as they will be used. This will give you a visual idea of how the components work, and will also confirm that everything is present and accounted for.



**IMPORTANT:** All baseplates **must** be assembled with all the bolts left loose for final adjustment and positioning (before tightening) unless otherwise instructed. All bolts **must** be torqued for proper strength. If more than one bolt is used per fastening point, the diagram may only show one. Use flat washers over all slotted holes and lock washers on all fasteners.

## **WARNING**

Failure to heed these warnings or follow the installation instructions may result in a voided warranty, loss of towed vehicle, personal injury or death.

- Do not weld or modify this baseplate or its components. Welding or modification will void the warranty.
- Do not use this document as a basis to design/fabricate a baseplate, as it may not show all parts or structural components.
- We strongly recommend professional installation.
- If the towed vehicle has been in an accident, it must be properly repaired before attaching the baseplate. Do not install the baseplate if any structural frame damage is found.
- The installer must use all bolts and parts supplied. If running changes were made by the vehicle manufacturer after this kit was designed, some bolts or other fasteners may no longer be the correct size. It is the installer's responsibility to verify this kit is securely fastened to the vehicle.
- Use Loctite® Red on all bolts used to secure this baseplate. Torque all bolts to the specifications found at the end of these instructions. Do not over-torque the bolts or failure may occur.
- The installer must inspect the baseplate to ensure adequate clearance, particularly around hoses, air conditioner lines, radiators, etc. or non-warranty failure may result.
- Roadmaster manufactures many styles of baseplates. If your baseplate has removable arms, they must be removed before driving the vehicle, unless the arms can be pinned or padlocked in place. If not secured, the arms could vibrate out.
- Some motorhome chassis have such a tight turning radius that you can damage your motorhome, towed vehicle, tow bar or baseplate while turning sharply. Before getting on the road, test your turning radius in an empty parking lot. Turning too sharply could result in non-warranty damage to your towing system, motorhome and/or towed vehicle.
- Do not back up with the towed vehicle attached or non-warranty damage will occur to your towing system or vehicles.
- The safety cables must connect the towing vehicle to the towed vehicle frame to frame, with the cables crossed, with enough slack for sharp turns. See cable instructions for proper routing. Failure to do so will result in non-warranty damage and/or the loss of the towed vehicle.
- This kit is designed for use with ROADMASTER tow bars and ROADMASTER adapters only. Using this kit with other brands, without an approved ROADMASTER adapter, may result in non-warranty damage or injury.
- Receiver extensions and out-of-level towing situations of 3 inches or more. This can cause the system to swing much higher and lower, causing excessive strain on the tow bar, baseplate and frame. That can cause the towing system to fail, causing property damage, personal injury or even death. If you must use a receiver extension or drop hitch to tow, it will reduce your receiver's weight capacity by 1/3 to avoid damaging your system. Never use more than one extension and/or drop hitch, as this will void your warranty.
- Every 3,000 miles, the owner must inspect all mounting points for cracks or fatigue, and check the fasteners for proper torque, according to the bolt torque requirements chart on the last page of these instructions.
- The owner must follow the vehicle manufacturer's instructions to prepare the vehicle for towing. Failure to do so may cause severe damage to the vehicle.
- This baseplate is only warranted for the original installation. Installing a used baseplate on another vehicle is not recommended and will void the warranty.



# BASEPLATE KIT INSTALLATION INSTRUCTIONS

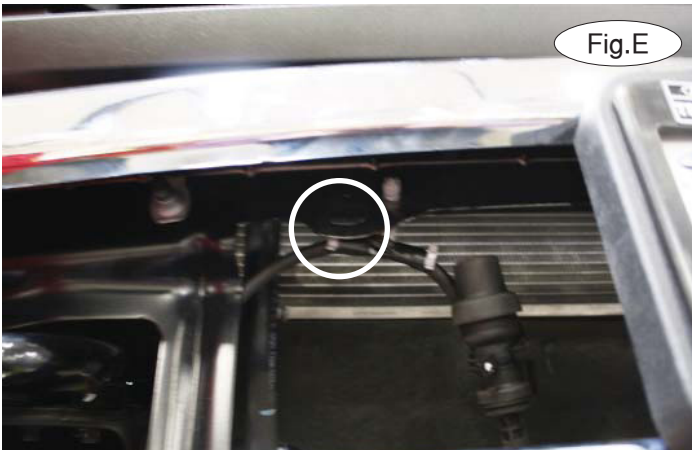
**KIT# 4428-3**

10/13/22  
KS

ROADMASTER, Inc. 6110 NE 127th Ave. Vancouver, WA 98682 360-896-0407 fax 360-735-9300 www.roadmasterinc.com



1. **Important: please use all supplied bolts and parts and read all instructions carefully before beginning this installation. The majority of questions you may have can be answered within the text, and proper installation will ensure safe and secure travel.** Now, begin the installation. Remove three plastic fasteners attaching the air deflector to the back of the bumper core (Fig.C).



2. On each side, remove two 13mm (head) bolts attaching the bumper brace to the frame rail (Fig.D).
3. On the passenger side only, remove the plastic clip attaching the engine block heater to the bumper, if the vehicle is so equipped (Fig.E).
4. On each side, remove two 18mm (head) bolts attaching the bumper to the tow hook (Fig.F).
5. Pull out and forward to remove the bumper (Fig.G).





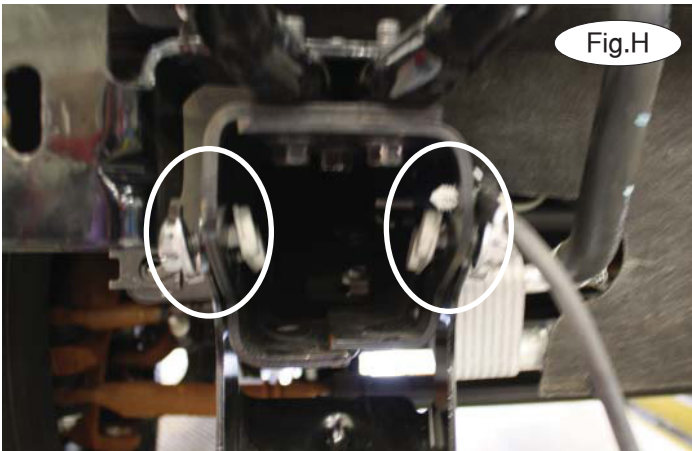


# BASEPLATE KIT INSTALLATION INSTRUCTIONS

**KIT# 4428-3**

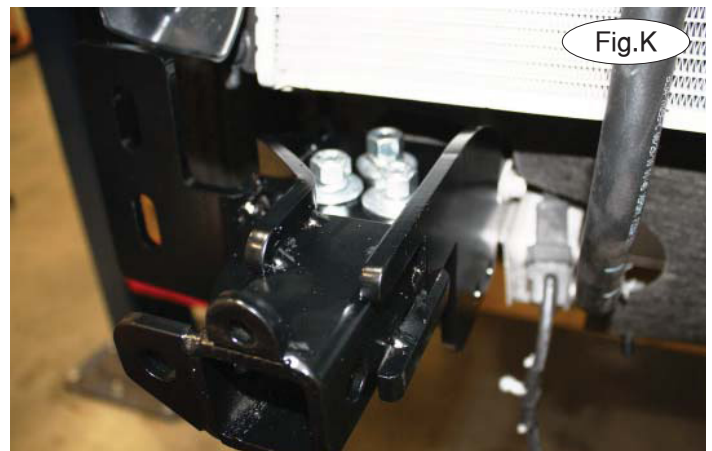
10/13/22  
KS

ROADMASTER, Inc. 6110 NE 127th Ave. Vancouver, WA 98682 360-896-0407 fax 360-735-9300 www.roadmasterinc.com



6. **For F350 models only:** on each side, remove four 18mm (head) bolts and bolt plates attaching the bracket to the end of the frame rail (Fig.H). The bracket will not be replaced. Retain the hardware for reinstallation in step 10.

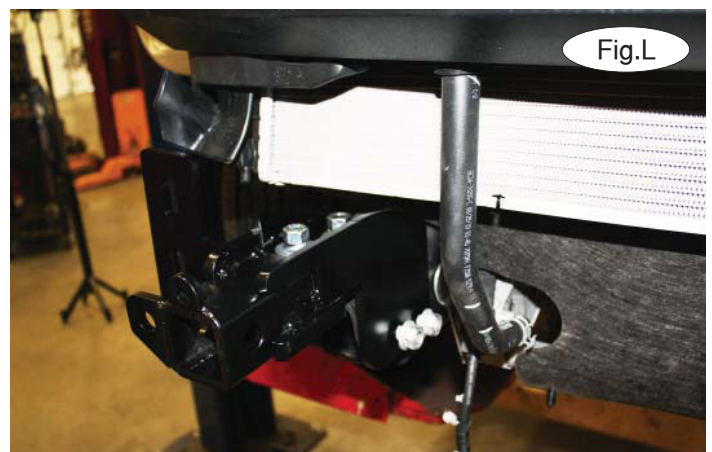
7. On each side, remove three 15mm (head) bolts attaching the tow hook to the frame rail (Fig.I). *Note:* the tow hooks and hardware will not be replaced. Retain the tow hooks and attachment hardware for replacement in case the bracket is ever removed.



8. On the passenger side only, remove the plastic fastener attaching the engine block heater to the side of the frame rail (Fig.J).

9. Working on the passenger side, place the main receiver brace over the end of the frame rail and using three of the supplied  $\frac{1}{2}$ " x  $1\frac{3}{4}$ " bolts, bolt through the tow hook mount and through the main receiver brace. Finish with a  $\frac{1}{2}$ " flat washer, lock washer and nut (Fig.K). Due to manufacturing variances, the holes may need to be enlarged to  $\frac{1}{2}$ ". *Note:* use Loctite® Red on all bolts used for mounting this bracket.

10. **For F350 models only:** use the hardware from step 6 to attach the main receiver brace to the frame rail. **For all other models:** use the four supplied  $\frac{1}{2}$ " x  $1\frac{1}{2}$ " bolts, lock washers and nuts to attach the main receiver brace to the frame rail (Fig.L).





# BASEPLATE KIT INSTALLATION INSTRUCTIONS

**KIT# 4428-3**

10/13/22  
KS

ROADMASTER, Inc. 6110 NE 127th Ave. Vancouver, WA 98682 360-896-0407 fax 360-735-9300 www.roadmasterinc.com

11. Torque all bolts to the bolt torque requirements found at the end of these instructions.
12. Repeat steps 9 through 11 for the driver's side
13. Zip tie the engine block heater to the oil cooler line (Fig.M).
14. Reinstall the fascia, reversing steps 1 through 5.
15. Fit the front bracket arms into the front receiver braces.
16. Install the tow bar to the mounting bracket according to the manufacturer's instructions. Connect the safety cables to the safety cable tabs illustrated on the first page of these instructions.

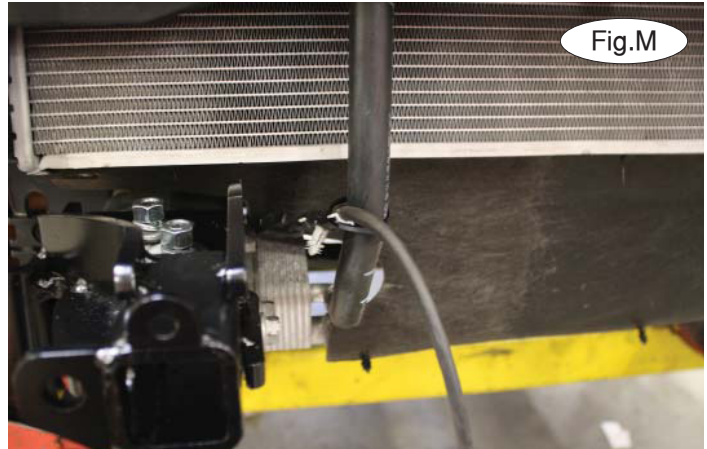


Fig.M

## BOLT TORQUE REQUIREMENTS

Note: The torque values represented below are intended as general guidelines. Torque requirements for specific applications may vary. Roadmaster does not warrant this information to be accurate for all applications and disclaims all liability for any claims or damages which may result from its use.

### STANDARD BOLTS

Thread Size	Grade	Torque
5/16.....	5.....	13 ft./lb.
3/8.....	5.....	23 ft./lb.
7/16.....	5.....	37 ft./lb.
1/2.....	5.....	56 ft./lb.
5/8.....	5.....	150 ft./lb.

### METRIC BOLTS

Thread Size	Grade	Plated / Unplated
8mm-1.0 .....	8.8 .....	20 ft./lb. 18 ft./lb.
8mm-1.25 .....	8.8 .....	19 ft./lb. 18 ft./lb.
10mm-1.25 .....	8.8 .....	38 ft./lb. 36 ft./lb.
10mm-1.5 .....	8.8 .....	37 ft./lb. 35 ft./lb.

### METRIC BOLTS

Thread Size	Grade	Plated / Unplated
12mm-1.25 .....	8.8 .....	70 ft./lb. 65 ft./lb.
12mm-1.5 .....	8.8 .....	66 ft./lb. 61 ft./lb.
12mm-1.75 .....	8.8 .....	65 ft./lb. 60 ft./lb.
14mm-2.0 .....	8.8 .....	104 ft./lb. 97 ft./lb.

All illustrations and specifications contained herein are based on the latest information available at the time of publication approval. ROADMASTER, INC. reserves the right to make changes at any time without notice in material, specification and models or to discontinue models.